

Wine to ring

DEM

Hebenly bells

SONG AND CHORUS

WORDS BY

Sam Lucas,

MUSIC BY

JACOB J. SAWYER.



PUBLISHED BY

S. BRAINARD'S SONS,

CLEVELAND & CHICAGO.

KANSAS CITY:
CONOVER BROS.

CINCINNATI:
JND CHURCH & Co.

ST. PAUL:
DYER & HOWARD.

EDWIN PHILLIPPS

Oct. 6, 1916

GWINE TO RING DEM HEBENLY BELLS.

Words by SAM LUCAS.

Music by J. J. SAWYER.

Allegretto.

PIANO.

f

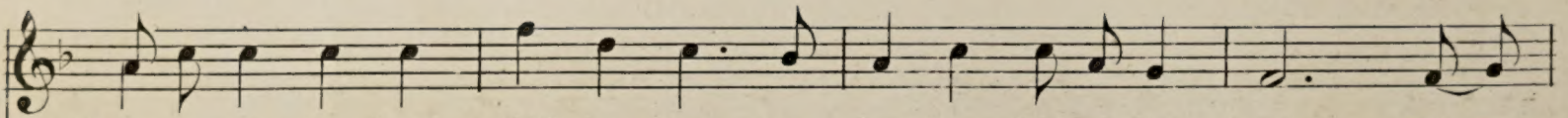
Musical notation for the piano introduction, consisting of two staves (treble and bass clef) in common time. The music begins with a treble clef and a common time signature. The first staff contains a series of chords and single notes, while the second staff provides a harmonic accompaniment with chords and single notes. The dynamic marking *f* is present.

Musical notation for the piano accompaniment, consisting of two staves (treble and bass clef) in common time. The music continues from the introduction with more complex chordal textures and melodic lines in both hands.

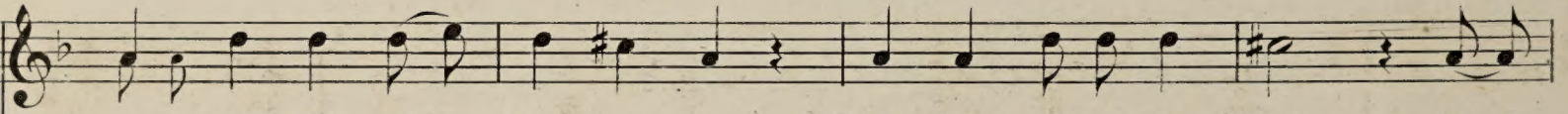
Musical notation for the vocal line, consisting of a single treble clef staff in common time. The melody is simple and follows the lyrics.

- 1. Oh, come 'long, sis-ter, don't be late, ring dem heben-ly bells, If you
- 2. When de whale was float-in' down de stream, ring dem heben-ly bells, He
- 3. I'll tell, you now as I said be-fore, ring dem heben-ly bells, I'll

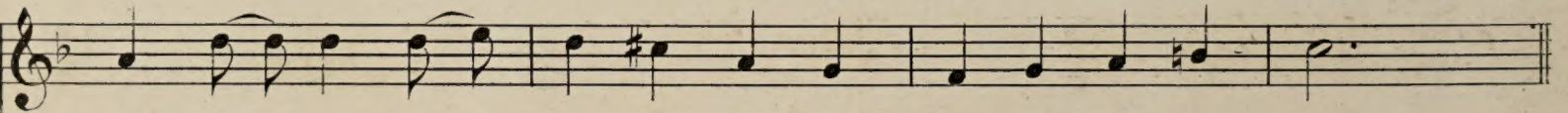
Musical notation for the piano accompaniment, consisting of two staves (treble and bass clef) in common time. This section continues the accompaniment for the vocal lines, featuring chords and simple melodic fragments.



'spec to git in dem golden gates to ring dem heben-ly bells, Oh, de
 swallowed Jonah and didn't he scream, so ring dem heben-ly bells, When
 sing dis verse and sing no more, ring dem heben-ly bells, De

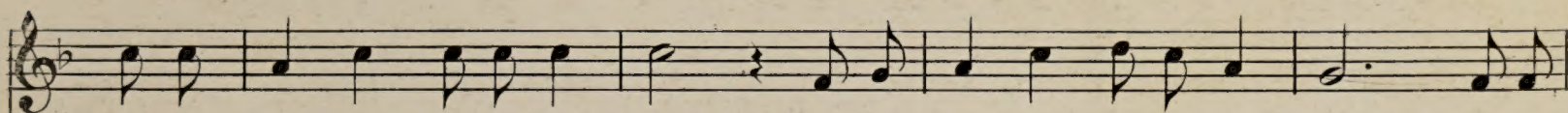


gates am gold and de hing-es, too, Ring dem heben-ly bells, Dar's
 Jonah was all dat he had on hand, Ring dem heben-ly bells, He
 mu - sic lies now on de shalf, Ring dem heben-ly bells, If you

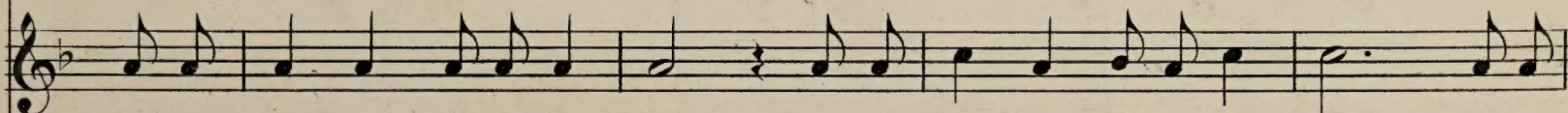
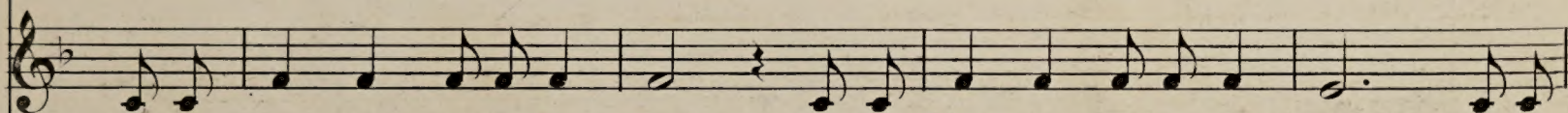


plen - ty of room for me and you, to ring dem hebenly bells.
 cast him up on de dry land, to ring dem hebenly bells.
 want any more you'll sing it your-self, so ring dem hebenly bells.

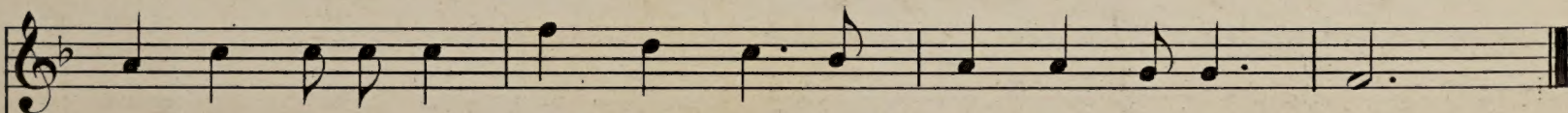
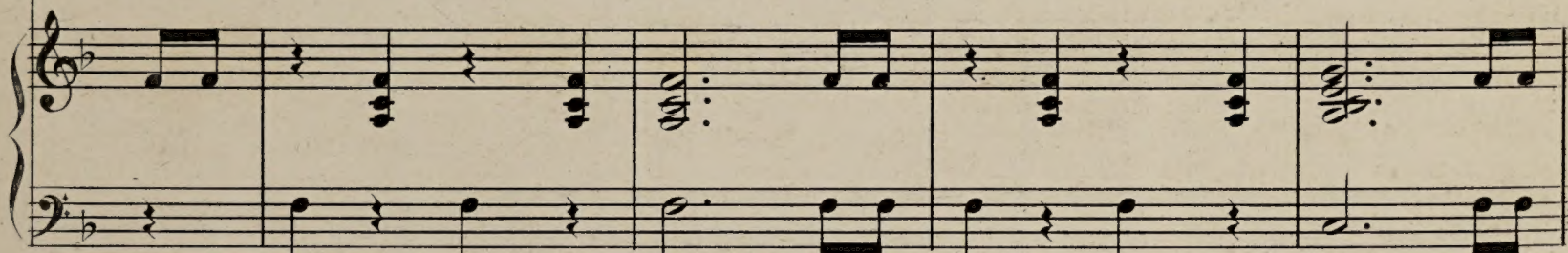
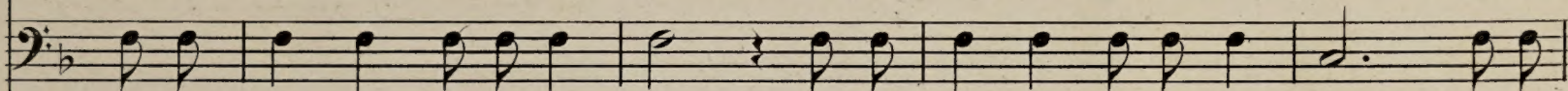
CHORUS.



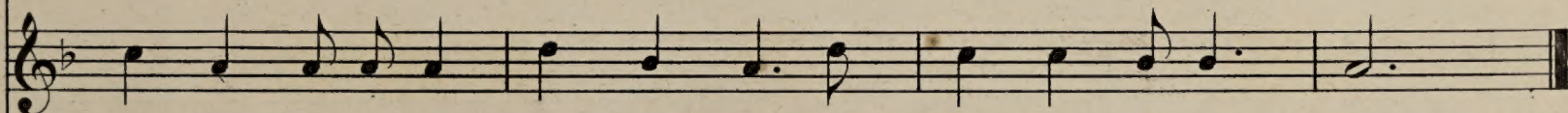
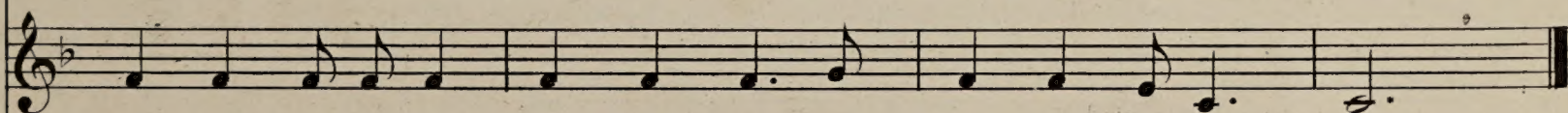
Gwine to ring dem heben-ly bells, Gwine to ring dem heben-ly bells, Gwine to



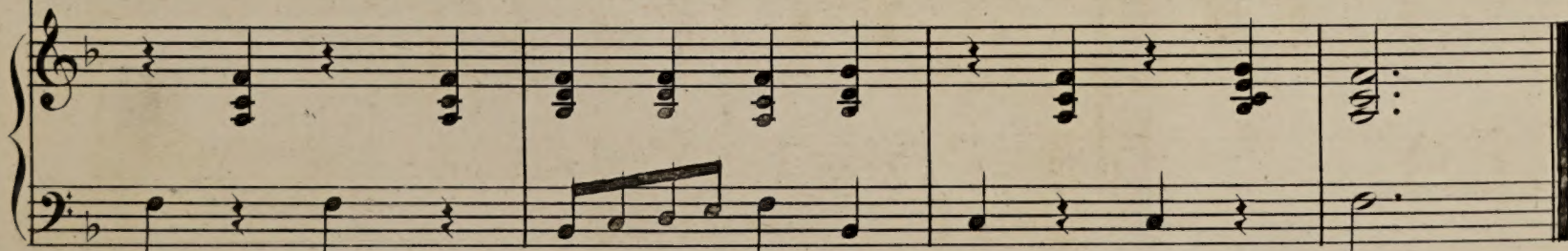
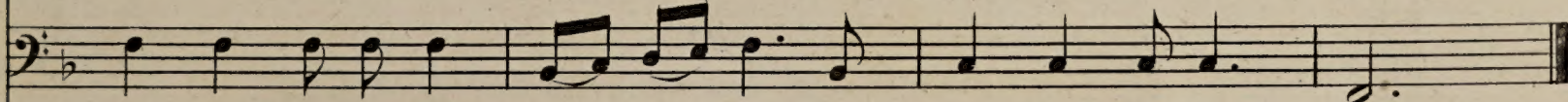
Gwine to ring dem heben-ly bells, Gwine to ring dem heben-ly bells, Gwine to



ring dem heben-ly bells, good Lord, to call dem chillen home.



ring dem heben-ly bells, good Lord, to call dem chillen home.



BOSTON PUBLIC LIBRARY



3 9999 08678 932 6

MAR 22 1918

